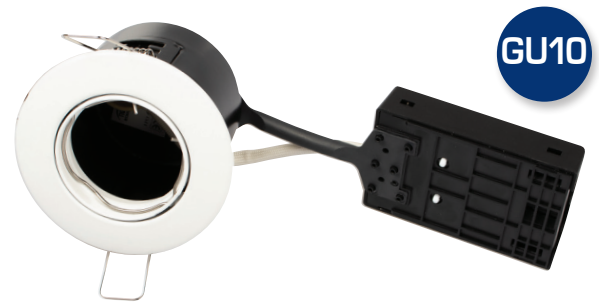


# Alda without light source

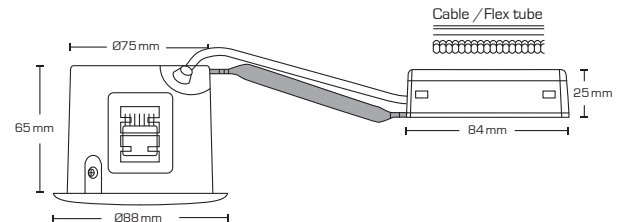
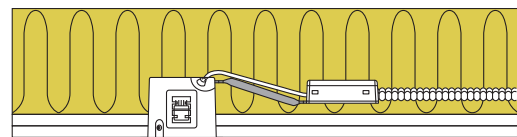
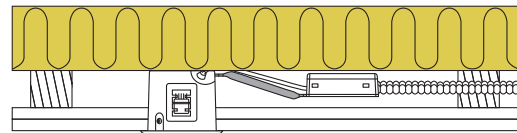


## Product description:

- Alda is a classic adjustable LED downlight, that is approved for direct installation in insulation and flammable material.
- Screwless cable relief and wire mount in terminal box, ensures a quick and easy assembly with minimal use of tools.
- Possibility of 2 spring positions - depending on the ceiling construction.
- The mounting height of only 65 mm ensures many applications.
- It is possible to mount with cable or 16 mm flexible tube.



GU10



## Technical data:

Cutout size:	Ø75 mm
Outside dimensions:	Ø88 mm
Height:	65 mm
Voltage:	220-240VAC 50 Hz
Approved light source:	Max. 6W LED (max light source height 56 mm)
Beam angle:	38°
Adjustable:	25°
Fitting:	GU10
IP Class:	IP21
Insulation class:	Class II
Material:	Steel / Aluminium
Through-wiring:	Yes (3G1,5 mm <sup>2</sup> )
Approvals:	LVD, RoHS, CE

Item no.:	EAN Code:	Outside dimensions:	Front design:	Color:
10061	5713080100618	Ø88 mm	Round	White
10062	5713080100625	Ø88 mm	Round	Brushed aluminium
12423	5713080124232	Ø125 mm	Sealing ring	

